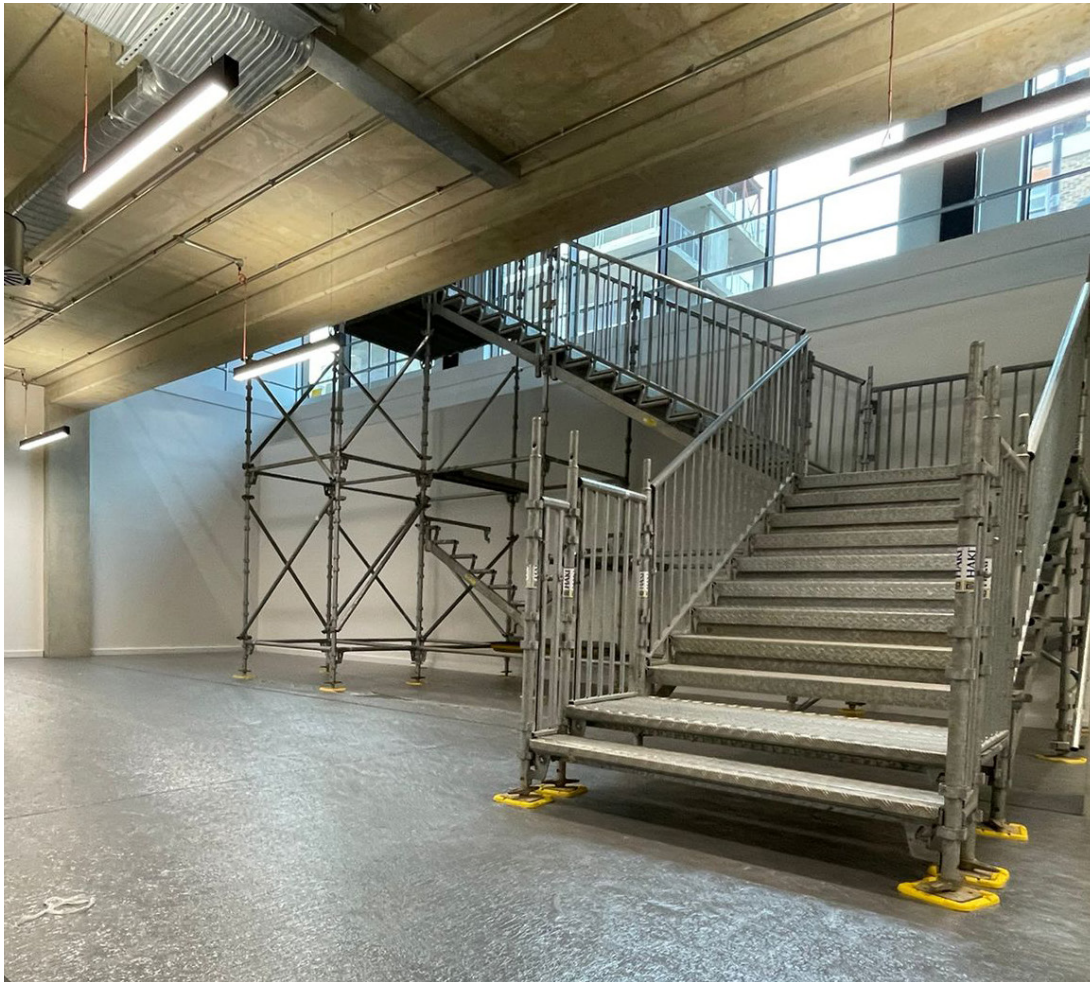


# UKSSH AND TAMWORTH SCAFFOLD DELIVER STYLISH SOLUTION.



When The Block, a brand new, sophisticated urban sustainable venue in the Centre of London, was finalising one of its first events, only one thing was missing: the staircase to link the ground and lower ground floors of the 16,500 sq. ft venue

With the venture's first fashion show just days away, The Block approached the UK's leading temporary public access specialists – a company that would design and deliver the ideal solution within a very tight timescale.

UK System Scaffold Hire responded to The Block's enquiry with a site visit within 24 hours and provided a design solution that not only complied

with all safety standards, but also perfectly complemented the contemporary industrial style of the venue.

Tamworth Scaffolding erected the staircase in a working day, even managing to reconfigure the design slightly to optimise the use of the space.

The Haki public access staircase was designed with steel treads and enclosed backs to ensure the comfort and safety of an audience that would include many people wearing high heels.

# GASE STUDY

## UKSSH

**Midlands:** Magnus, Tame Valley Industrial Est, Wilnecote, Tamworth B77 5BY  
**North:** Meadow House Way, Buttermilk Lane, Bolsover, Chesterfield Derbyshire S44 6AE

**T** 0800 304 7670 **E** info@ukssh.co.uk **W** ukssh.co.uk

